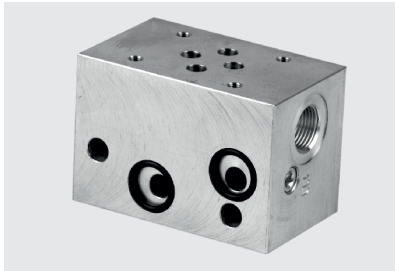


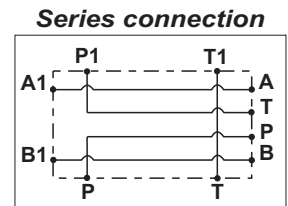
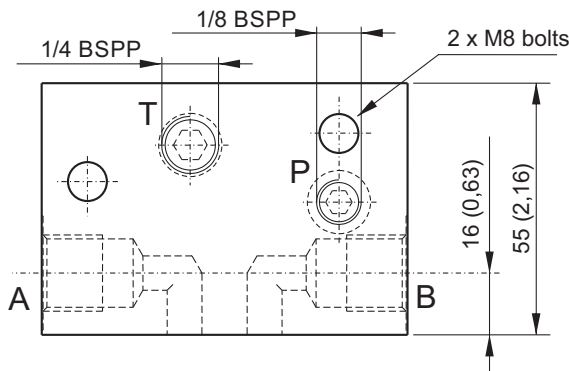
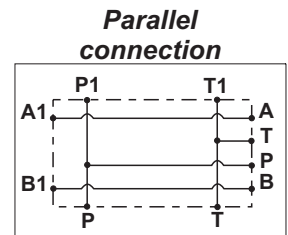
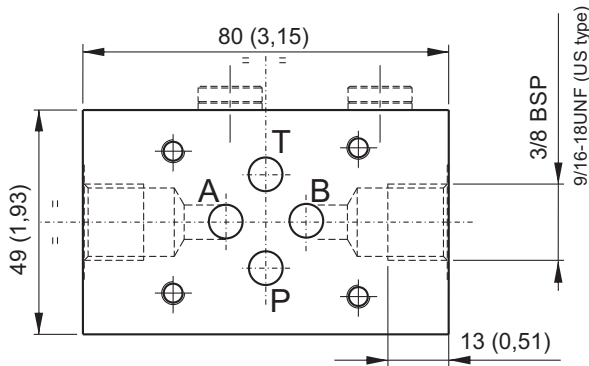
MODULAR MANIFOLDS NG6 (CETOP 3), 3/8 G LATERAL PORTS



Dimensions in mm (inches)

Main features

Max pressure	350 bar
Weight	0,56 Kg (1,2lb)
Fixing bolts	2 M8 tie - rods steel class 8.8 or above



Option 1/4" BSP P port:

Spare part code	PORTMF0001
------------------------	------------

<i>Parallel connection</i>	Spare part code	<i>Series connection</i>	Spare part code
Lateral ports	E60403010	Lateral ports	E60403011
Lateral port US execution	E60403010US	Lateral port US execution	E60403011US

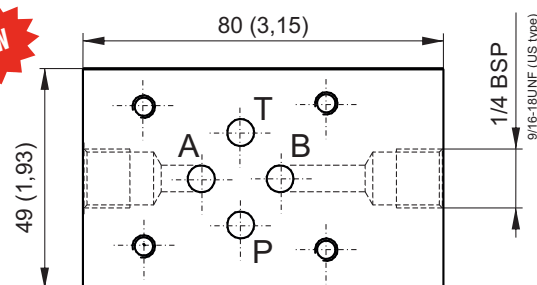
MODULAR MANIFOLDS NG6 (CETOP 3), 1/4 G LATERAL PORTS



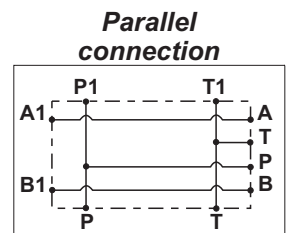
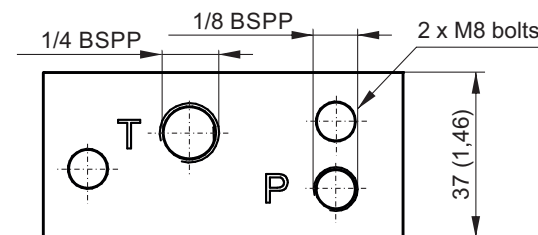
Dimensions in mm (inches)

Main features

Max pressure	350 bar
Weight	0,334 Kg (0,74lb)
Fixing bolts	2 M8 tie - rods steel class 8.8 or above



<i>Parallel connection</i>	Spare part code
Lateral ports	E60403012
Lateral port US execution	E60403012US



Note: Recommended tightening torque for M8 bolts: 16 Nm. Attention! Do not use tie-rods less than 8.8.

*: US execution with 9/16-18UNF SAE06 exit ports

To add external manifolds to a PPC assembly code, just add their spare part codes at the end of the PPC code. eg: PPC-0,8 12DC-MB-J-K0,6-V200-G-RETURN KIT-1,5L+E60403004+E60403010.

The Cetop attachment is on motor side. With AC motor frames bigger than 71 and DC motors bigger than dia. 125mm, always add a spacer manifold (see E60403004 code in F section) below the Cetop manifold to avoid interference between the valve and the motor. Code does not include the Cetop solenoid valve. See NG6 (Cetop 3) valves table in section G.